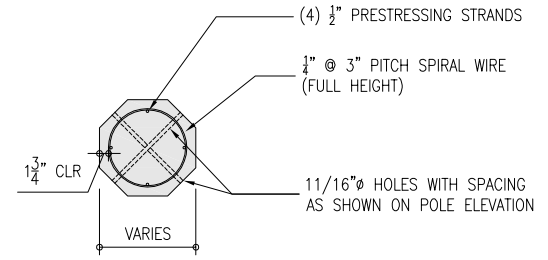
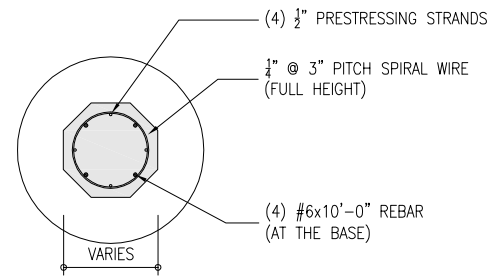


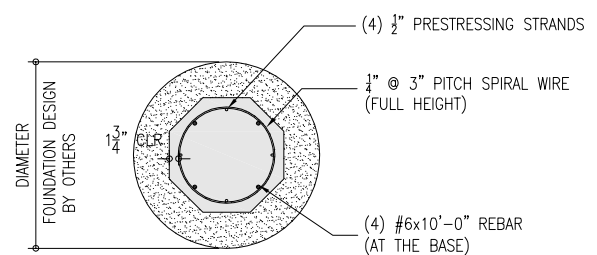
**1 LIGHT POLE ELEVATION**  
 Scale: 1/2" = 1'-0"  
 POLE WEIGHT = 6,430 LBS



**2 SECTION NEAR TOP**  
 Scale: 3/4" = 1'-0"



**3 SECTION NEAR BASE**  
 Scale: 3/4" = 1'-0"



**4 SECTION AT FOUNDATION**  
 Scale: 3/4" = 1'-0"

**DESIGN CRITERIA**

Basic wind velocity	V = 170 MPH
Exposure category	D
Importance factor	I = 1.15
Wind directionality factor	Kd = 0.95 (for octagonal pole)
Gust effect factor	G = 0.85
28th-day concrete strength	f'c = 6,500 PSI
Strand ultimate strength	fpu = 270 ksi (ASTM A416)

**NOTES ON PRESTRESSED OCTAGONAL CONCRETE POLES**

- PRESTRESSED CONCRETE OCTAGONAL POLES DESIGN ARE BASED ON THE PROVISIONS OF THE FOLLOWING STANDARDS
  - IBC-2009
  - ASCE 7-05
  - AASHTO LTS-5
  - ACI 318-08
- REFER TO ELECTRICAL DRAWINGS FOR ELECTRICAL LIGHTING AND MOUNTING REQUIREMENTS
- METHOD OF EMBEDMENT IS NOT PART NOR THE RESPONSIBILITY OF THE PRESTRESSED CONCRETE POLES MANUFACTURER. POLE EMBEDMENT LENGTH SHALL BE COORDINATED WITH THE MANUFACTURER PRIOR TO PRODUCTION OF POLES.
- FOR THE PURPOSE OF DETERMINING THE TOTAL LENGTH OF POLE, EMBEDMENT LENGTH WAS ESTABLISHED USING A RULE OF THUMB WHICH IS 10% OF THE TOTAL POLE LENGTH PLUS 2 FEET ROUNDED TO THE NEAREST FOOT.

NO.	REVISIONS	DATE



DRAWN	CHECKED
BY:	BY:
DATE:	DATE:
JOB NUMBER:	DETAIL NO:
	LP-25_18