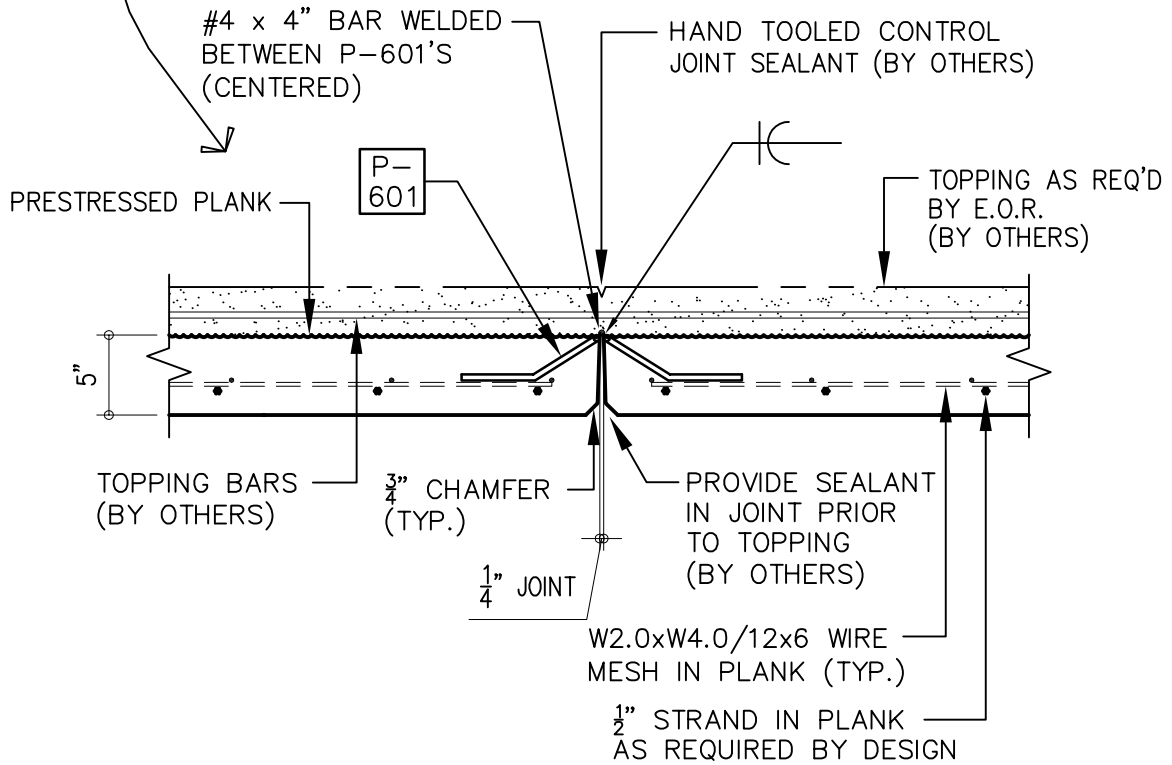


TYPICAL PLANK MODULE



TYPICAL PLANK JOINT

NOTES:

1. TYPICAL PLANKS ARE BASED ON A 8'-0" WIDE MODULE. WIDER UNITS ARE AVAILABLE ON REQUEST.
2. STANDARD PLANK IS 5" THICK. OTHER DIMENSIONS ARE AVAILABLE TO MEET SPECIFIC DESIGN REQUIREMENTS. CONSULT RMP FOR ADDITIONAL INFORMATION.

ISSUED MAY 2015

REVISED

PRESTRESSED
PLANK

PP-1